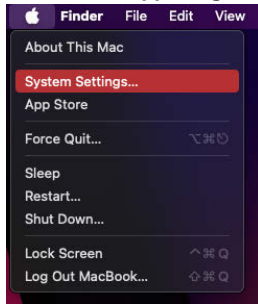
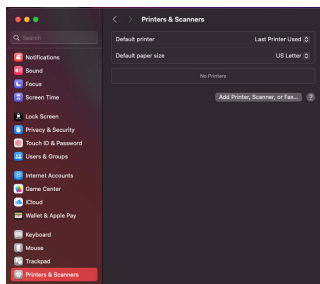


Printer Install Instructions: MacOS - Kyocera Taskalfa 6054i

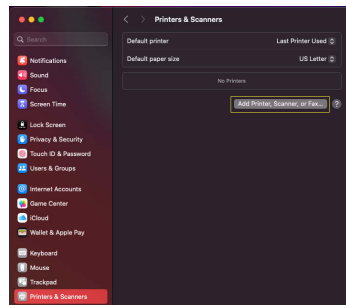
1. **Important: First, google search "Kyocera Taskalfa 6064ci driver" - download and install driver (please see how-to video)**
2. Retrieve printer name from the physical printer. It can be found on a label in this format: Ex. MLL_GH115_KY6054
3. Click on the Apple logo on the top left corner of the screen. Then select "System Settings"



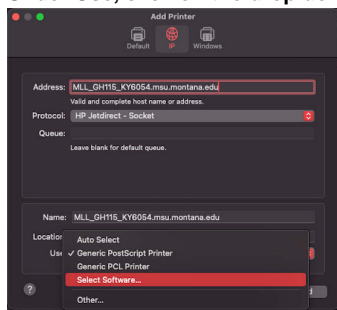
4. Then select "Printers & Scanners".



5. Click on the Add Printer, Scanner button



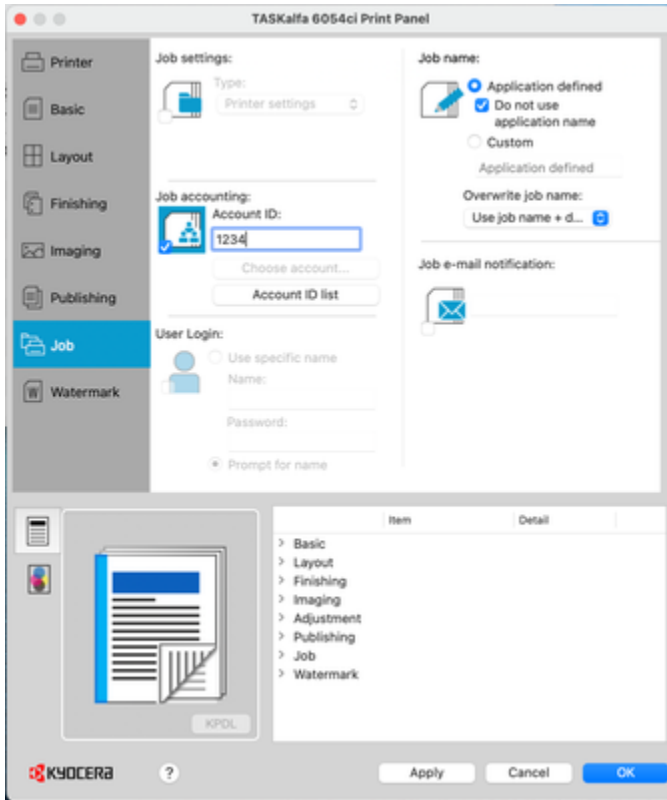
6. Select the IP tab (globe icon).
7. Input the printer name in the Address line - **MLL_GH115_KY6054.msu.montana.edu**
8. Protocol: Select "HP Jetdirect – Socket"
9. Keep the Name as is or change to your preference
10. The "Use" field should auto-populate with the correct driver, ex **Kyocera TASKalfa 6054ci KPD**
11. If it does, skip to step 14, if not continue to step 12.
12. Under Use, click on the drop down and select "Select Software"



13. A new window will open, search for your Kyocera model (ex. 6054) and select the driver result.
14. Click "Add" to add the printer.
15. To add the job codes (Pin)
16. Open "Kyocera Print Panel" found in the Applications folder on your Mac.



- a.
17. Once open, select the printer and the "Job" button will show up on the left, click that.



- a.
18. Look for "Job Accounting" and click the box. Now you can add your "Account ID"
19. Finally click "Apply" then "OK" to accept the changes and close the window.