

MACDEP NEWS

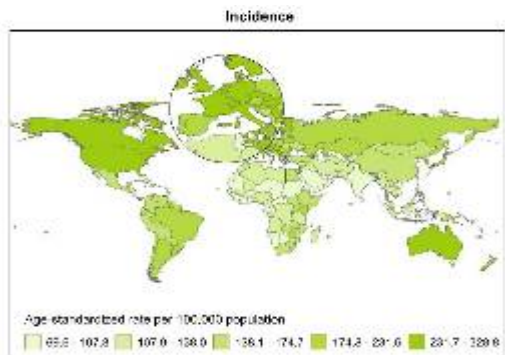
MONTANA ASSOCIATION OF COMMUNITY DEVELOPMENT EXTENSION PROFESSIONALS

November 2016

Reports & Resources

Cancer Deaths to Rise 60% by 2030 The Guardian | [READ STORY](#)

Two reports have warned of an explosion in cancer deaths among women, with a toll, mainly from breast cancer, of around 5.5 million a year by 2030 – roughly the population of Denmark. This represented a near 60% increase in less than two decades as described by the American Cancer Society (ACS) at the recent World Cancer Congress in Paris.



World's \$152 Trillion Debt Pile Bloomberg | [READ STORY](#)

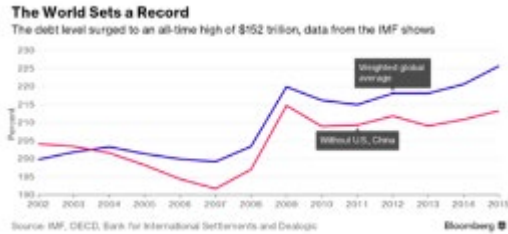
President's Corner

The [MACDEP](#) Annual Business Meeting took place Oct. 26, and I'm happy to announce the election of the 2017 Officers of the Association: Abbie Phillip, President; Jennifer Anderson, Vice-President; Katie Weaver, Secretary; Pat McGlynn, Treasurer who will take office Jan. 1, 2017. It's been my honor and privilege to serve as your MACDEP President for the last 8 years; thank you for your trust and the opportunity. I'll work with Abbie on her transition as your new MACDEP President.

The Call for Proposals for the 2017 CDS-NACDEP Conference are due Nov. 18. More information is available at our website www.2017CDS-NACDEP.org or via the [Community Development Society](#) and [National Association for Community Development Extension Professionals](#) websites.

2016 NACDEP Nominations Close on November 9; Don't miss the opportunity to nominate

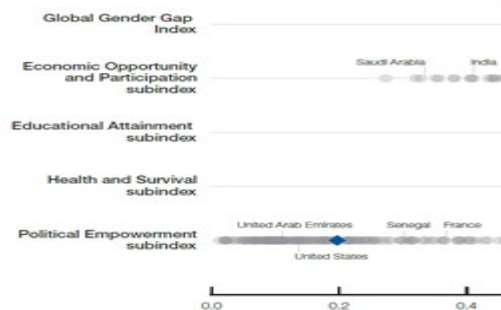
Eight years after the financial crisis, the world is suffering from a debt hangover of unprecedented proportions. Gross debt in the non-financial sector has more than doubled in nominal terms since the turn of the century, reaching \$152 trillion last year, and it's still rising, the International Monetary Fund said.



We Will Close the Gender Pay Gap...in 170 Years?

Alternet | [READ STORY](#)

A new report put out by the World Economic Forum (WEF) estimates that it could take 170 years to close the pay gap between men and women. Last year the WEF forecasted that it would take roughly 118 years for women to catch up. This year, they pushed the expected arrival date up to 2186.



Many Say Citizens Can Influence Government

Pew Research Center | [READ STORY](#)

Signs of political discontent are increasingly common in many Western nations, with anti-

yourself or another NACDEP leader for the 2017-2018 Board of Directors. Nominations are currently being accepted for President-Elect, Secretary, Treasurer and Western Region Representative. More info [here](#).

-Paul Lachapelle
2016 MACDEP President

Upcoming Events

2017 Association for International Agricultural and Extension Education Conference

April 24-28, 2017
Minneapolis, MN
Sponsor: AIAEE

National Urban Extension Conference 2017

May 8-11, 2017
Bloomington, Minnesota
Sponsor: University of Minnesota

2017 CDS - NACDEP Conference

June 11-14, 2017
Big Sky, MT
Sponsor: CDS / NACDEP

Grants, Awards & Jobs

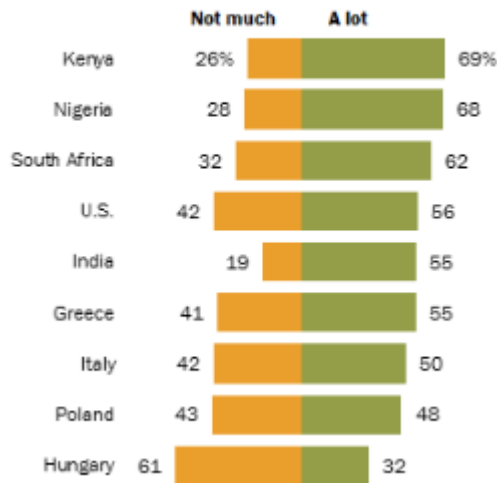
USDA: Community Food Projects Competitive Grant

Deadline: November 30
Funder: Department of Agriculture

NSF: Smart and Connected Communities

establishment parties and candidates drawing significant attention and support across the European Union and in the United States. Meanwhile, as previous Pew Research Center surveys have shown, in emerging and developing economies there is widespread dissatisfaction with the way the political system is working.

There is ___ ordinary citizens can do to influence our government



One in Seven Children Suffer from High Air Pollution

UNICEF | [READ STORY](#)

Ultrafine, airborne pollutants, caused primarily by smoke and fumes, can more easily enter and irritate children's lungs, causing and exacerbating life-threatening disease. Studies show these tiny particles can also cross the blood-brain barrier, which is less resistant in children, causing inflammation, damaging brain tissue, and permanently impairing cognitive development. They even can cross the placental barrier, injuring the developing fetus when the mother is exposed to toxic pollutants.

Deadline: February 16
Funder: National Science Foundation

HHS: Community Economic Development Healthy Food Financing Initiative Projects

Deadline: April 28
Funder: Department of Health and Human Services

Community Development Regional Specialist

Community Development
University of Missouri

Professor of Economics

Associate/Assistant Professors
West Virginia University

National/International News

[Hungary Rejects Migrant Abuse](#)

ABC News, November 3

[Women with Children Last Out of Migrant Camp](#)

ABC News, November 3

[\\$151M Settlement Tentatively Approved](#)

Fox News, November 3

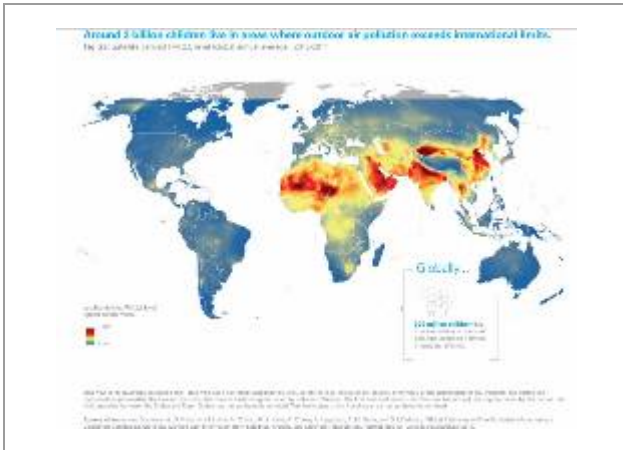
[Gas Prices Rise After Pipeline Blast](#)

CNN, November 3

[Unlocking Private Funds for Climate Finance](#)

Devex, November 3

[Portland's Proposed Residential Infill Policies](#)



Green Tariffs Take Off in the US World Resources Institute | [READ STORY](#)

WRI's updated issue brief, *Emerging Green Tariffs in US Regulated Electricity Markets*, shows that as of September 2016, traditional utilities in the United States have created 10 green tariff options, twice the number that existed at the end of 2015. Utilities offering these large-scale renewable energy purchasing programs include some of the country's largest shareholder-owned utilities, like Xcel Energy and Duke Energy.



Planetizen, November 3

Haiti's Cholera Epidemic

NY Times, November 3

The New Energy Economy

NY Times, November 3

Montana News

Health Insurance Tax

KBZK, November 3

Solar Savings for Gardiner Grocery Store

USDA, November 3

USDA Assists in Expanding Markets for Small Businesses

USDA, November 3

The Trapping Initiative Explained

KULR, November 3

Coats for Kids

KXLF, November 3

Lack of Seat Belt Enforcement Costs Montana

Billings Gazette, November 3

Diversity Forum Underway at the University of Montana

KPAX, November 3

Project Hope Finds New Home

Billings Gazette, November 3



MSU Extension Community Development | Wilson Hall 2-117 P.O. Box 172240 | Bozeman, MT 59717-2240

Tel: (406) 994-3620

Back issues of the MACDEP E-news are available [here](#)

To subscribe to the Montana CD E-Newsletter, send a request to: commdev@montana.edu