



# COMMUNITY DEVELOPMENT

# e · n e w s

October 2017

## Reports & Resources

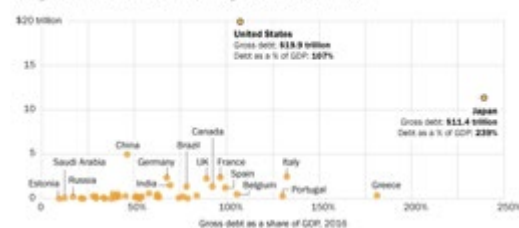
### 5 Facts About Government Debt Around the World

*Pew Research Center* | [READ STORY](#)

The United States has more government debt than any other country analyzed, with nearly \$20 trillion in gross debt in 2016. Japan was second, with 1,285 trillion yen (more than \$11 trillion in 2016 dollars), followed by China with 34.5 trillion yuan (nearly \$5 trillion). (Gross debt refers to all public debt – including intragovernmental debt, or what the government owes itself. Net debt, by contrast, is gross debt minus government assets related to debt, such as pensions for government workers.).

**U.S. has most government debt overall; Japan has most debt relative to GDP**

Total gross debt in 2016 U.S. dollars, among G-20 and OECD nations



### MT CD Update

For Extension faculty in Montana, ID, UT, WA, and WY, please register for our upcoming Montana State University Extension **Community Development Update**, Dec. 5-7 at Chico Hot Springs - Register [here](#).

NACDEP is now recruiting new members for its Board of Directors. Nominations will be accepted until November 10, 2017, and the ballot period will be open until December 13, 2017. Link to the Online Nominee Application Form [here](#).

Paul Lachapelle  
*MSU Community Development Specialist*

## New Research Reveals There Are More Than 40 Million Slaves Worldwide

### *Common Dreams* | [READ STORY](#)

"Modern slavery occurred in every region of the world," according to two reports released on Tuesday during the 72nd session of the United Nations General Assembly, and produced by the U.N.'s International Labor Organization (ILO) and the Walk Free Foundation, in partnership with the International Organization for Migration (IOM). Of the 40.3 million victims of modern slavery last year, 24.9 million were in forced labor and 15.4 million were in forced marriages.

#### PREVALENCE

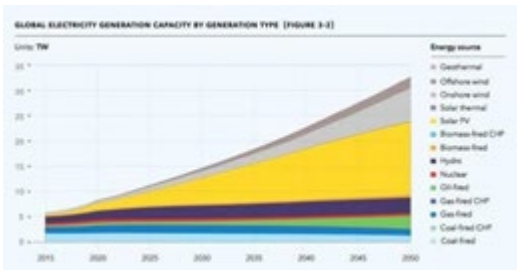
There were 5.4 victims of modern slavery for every thousand people in the world in 2016.

There were 5.9 adult victims of modern slavery for every 1,000 adults in the world and 4.4 child victims for every 1,000 children in the world.



## This is Just the Start of the Solar Age- Seven Graphs Show Why Renew Economy | [READ STORY](#)

The Energy Transition Outlook comes from DNV, a European-firm that provides independent assessments for both the fossil fuel industries (particularly oil and gas) and the renewable energy industry. You could say they have a foot in both camps. That makes its detailed forecast for the impending energy transition striking. It holds no good news for oil – it says that industrial production will peak in a few years and decline rapidly thereafter.



## Upcoming Events

### [Heartland Center's Annual Institute](#)

October 17-19, 2017  
Lincoln, Nebraska  
Sponsor: Heartland Center for Leadership Development

### [2017 NAE4-HA Conference](#)

November 12-17, 2017  
Indianapolis, Indiana  
Sponsor: Purdue Extension

### [Detroit 2018: Renaissance of Community](#)

July 22-25, 2018  
Detroit, Michigan  
Sponsor: Community Development Society

## Grants, Awards & Jobs

### [Funding to Advance Justice and Opportunity for People in Need](#)

Deadline: Ongoing  
Funder: Public Welfare Foundation

### [Service Area Competition](#)

Deadline: October 10  
Funder: Department of Health and Human Services

### [School Garden Grants](#)

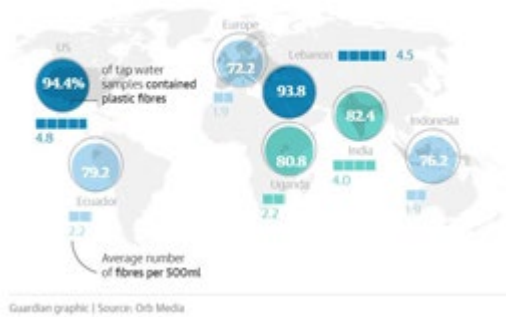
Deadline: October 8  
Funder: BirdSleuth K-1

### [Addressing Suicide Research Gaps: Understanding Mortality Outcomes \(RO1\)](#)

## Plastic Fibres Found in Tap Water Around the World, Study Reveals *The Guardian* | [READ STORY](#)

Microplastic contamination has been found in tap water in countries around the world, leading to calls from scientists for urgent research on the implications for health. Scores of tap water samples from more than a dozen nations were analyzed by scientists for an investigation by Orb Media, who shared the findings with the Guardian. Overall, 83% of the samples were contaminated with plastic fibres.

Tap water is widely contaminated by plastic



## World Hunger Again on the Rise, Driven by Conflict and Climate Change, New UN Report Says *World Health Organization* | [READ STORY](#)

After steadily declining for over a decade, global hunger is on the rise again, affecting 815 million people in 2016, or 11 percent of the global population, says a new edition of the annual United Nations report on world food security and nutrition released today. At the same time, multiple forms of malnutrition are threatening the health of millions worldwide.

Deadline: November 2  
Funder: Department of Health and Human Services

### [Associate Dean, Research](#)

College of Agricultural, Consumer and Environmental Sciences (ACES)  
University of Illinois Extension

### National/International News

#### [Aid Lags in Hurricane-Torn Puerto Rico](#)

ABC News, September 27

#### [Mexico Quake Death Toll Now 337, Including 198 in Capital](#)

ABC News, September 27

#### [How to Get Along With Sustainable Tourism's Government Gatekeepers](#)

Devex, September 27

#### [Three New Bridges for Crossing the L.A. River on Foot](#)

Planetizen, September 27

### Montana News

#### [Drones, Fireworks, and More Keep Birds Out of Berkeley Pit](#)

KBZK, September 27

#### [Specialists, Parents React to Proposed Cuts for Special Needs Children](#)

KULR, September 27



**MDU Files Request to Increase Rates for Montana Customers**

KXLF, September 27

**Montana Aims to Financially Help People with Disabilities**

Billings Gazette, September 27



MSU Extension Community Development | Wilson Hall 2-117 P.O. Box 172240 | Bozeman, MT 59717-2240  
Tel: (406) 994-3620

Back issues of the Community Development E-news are available [here](#)

To subscribe to the Montana CD E-Newsletter, send a request to: [commdev@montana.edu](mailto:commdev@montana.edu)