



May Club Mtgs

Geyser - May 25, 2025

Stanford - May 4th 6:00pm

Utica - No meeting this month, see you in June.



FAIR NEWS

*Fair entry will be open May 1 - June 23, 2025 on www.fairentry.com

*Some large animal classes have changed so we recommend that you review the fairbook before you do your fair entry online. Your club leaders have a copy of the fairbook for each family and it can also be viewed on our website.

*When entering a livestock exhibit, you will need to do an entry for your livestock project interview as well.

*Indoor exhibit classes have been updated. You can find the classes on our website or in Fair Entry. Fair Books distributed in March/April do not have updated indoor classes.

*You must be enrolled in the project to exhibit at fair. The drop/ad deadline for projects is June 1.

*Project Interviews will NOT be at the Stanford School this year due to construction. The location will be announced soon!

*All Fair book ad money should be turned into the Ext Office. If you have any money that has not been turned in, please do so immediately.

ATTENTION - LIVESTOCK EXHIBITORS

Members who have not completed the required Livestock Quality Assurance Training will not be able to enter any livestock classes in Fair Entry. Members who are needing this required training have been notified via email and should contact Sidney ASAP to complete the training.

MSU Extension Judith Basin County
Sidney Stratton, Agent sidney.stratton@montana.edu
Rebecca Fischer, Admin judithbasin@montana.edu
(406)566-2277 PO Box 427, Stanford, MT 5947

FAIR ENTRY OPENS MAY 1st!

CAMPS

JUNIOR CAMP - June 3-6, 2025 at Camp Rotary

*JR Camp is for 4-H members currently enrolled in grades 3-6.

*Registration closes May 9 on your ZSuite account.

*Cost is \$90 per camper, payable to JB Co. 4-H Council. The online payment option is not currently active. You will need to send a check with the forms.

*Medical forms and waivers must be printed from ZSuite and submitted to the Ext. Office BEFORE camp.

*Campers will select their workshops when registering on Zsuite.

*A packing list and camper check in details will be sent out shortly before camp.

*Counselors will report to camp June 2.

SENIOR CAMP - June 9-13, 2025 at Mtn Sky Ranch Emigrant

*SR Camp is for 4-H members who are 13 by 6/9/25.

*Registration closes May 28 on your ZSuite account.

*Cost is \$60 per camper, payable to Fergus Petroleum Co 4-H.

*Payment and registration forms are due to the Extension Office BEFORE camp.

TWEEN CAMP - Aug 7 -10, 2025 Glacier

*4-H members in 6th-8th grades.

*Registration on ZSuite April 25 - July 28.

*Cost is \$60 per camper. Checks payable to Fergus Petroleum Co. 4-H.

*Print forms from ZSuite and send to Fergus Ext. or our office BEFORE camp.

SCHOLARSHIPS

Colt R. Project Scholarship

applications are due June 1. The application and details can be found on our website.

Jan French Memorial Scholarship

applications are being accepted through June 1. The application consists of a 1-2 pg essay detailing how 4-H has impacted your life, how 4-H has prepared you for life after high school and what your plans are after graduating. The scholarship is open to high school seniors enrolled in a Judith Basin Co. 4-H program.

★ ★ ★
Memorial Day
May 26, 2025 ★ ★ ★
A day to remember the
Americans who served and
made the ultimate sacrifice



CONGRATULATIONS TO OUR 2025 HIGH SCHOOL SENIORS!



ELI

KAITAIA

AXEL

CLAYTON

JADYN

TJ

MCKENZI

MAC

ROYCE

HORSE

Horse Forms are due June 1. Forms can be found on our website, ZSuite and with your leader.

Curt Pate Horse Clinic May 10 and Chris Brown Horse Clinic May 31 - June 1, both in Lewistown. Call Fergus Ext. 535-3919 to register. Cost is \$60 per clinic.

Congratulations to Tallie Wootan, winner of the 2025 JBC Fair Book Cover Contest!



4HLIFE

for

LEADERSHIP IN FUTURE ENDEAVORS

MT 4-H Congress and Pre-Congress registration is open May 1 - June 15 on ZSuite.

SHEEP

Sheep clinic May 17 in Lewistown. Clinic will run 9:30-12:30 and lunch will be provided.

Sheep/Goat weigh / tag day is May 18 at the fairgrounds. We will begin at 1pm. A meeting and practice will immediately follow weigh-ins. Plans for summer camps and clinics are in the works.



Deadline to drop/add projects in ZSuite is June 1, 2025

**2025****JUDITH BASIN CO FAIR****JULY 28th - AUG 1st****Monday July 28**

8 am - **Working Ranch Horse**
Fairgrounds

Fair Set up immediately
following WRH. Mandatory for
all members

Wednesday July 30

8am **Horse Show** - Fairgrounds

9-11am ***Grade School exhibits**
placed & judged

1-2:45pm ***Open Class exhibits**
accepted in Exhibit Bldg

3pm **Open Class** Judging

4pm **Dog Show**

Tuesday July 29

9-11am **Project Interviews** - Location TBD / Ice
cream social for Demo Day Participants

9-11am ***Indoor & Cloverbud Projects** placed in
Exhibit Building

3-6pm **Livestock Weigh-ins** (3-3:45 sheep/goat,
3:45-5:15 swine, 5:15-6pm beef)

7pm **Exhibitor Meeting** (mandatory for all large/
small animal exhibitors)

Thursday July 31

7:30-11am **Swine Show** (showmanship, market,
breeding)

11:15 - 2:15pm **Small Animal Show** (cat, rabbit,
poultry)

2:15 - 6:30pm **Beef Show** (market, showmanship,
breeding)

**Friday August 1**

8-11am **Sheep & Goat Show** (market, showmanship, breeding)

8am **Ultrasounds** begin (order: beef, swine, sheep/goat)

11:30am **Small Animal Round Robin**

12:30 **Large Animal Round Robin**

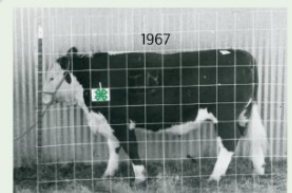
1:30 **Adult Showmanship**

4:30 **Pet Parade and Awards Ceremony**

5 pm **Buyer Dinner** under Stockman Bank Tent

6pm **Livestock Sale**

Barn Dance immediately following conclusion of Sale




Take Down
Saturday Aug 2
9am



2025 JB CO. FAIR AWARD SPONSORS

BUCKLE SPONSORS




WOODHALL
DISTRIBUTING

GAS • DIESEL • PROPANE

"Fueling Our Future For Generations to Come."

406-566-2671
406-567-2266

Proudly serving all of Central Montana.



UL &
CLUB LAMBS

Producing Winners Since 2002.


Jackie Urick & Janna LeNard VandenBos
Stanford, MT • 406-949-2528

GREEN GIANT FEEDLOT

Custom Cattle Feeders

John J. Gee

Feedlot 566-2204 • Home 566-2780



HICKEY
HEREFORD
RANCH

Stevens, Montana
Jack Hickey (1948-2011)

TRAVIS & NICOLE
HEDSTROM

BLUE NUGGET



406-423-5472
9393 S. Fork Rd,
Hobson, MT



Stockman Bank

Member FDIC

Dye Ranch

LEWISTOWN
PROPANE &
FERTILIZER LLC

PROPANE AND FERTILIZER
SALES AND SERVICE

LEWISTOWN 406-558-8791 MOORE 406-574-2528 STANFORD 406-566-2670 DENTON 406-567-2561

SERVING CENTRAL MONTANA AND SUPPORTING 4-H SINCE 1952

Mike & Nancy Metcalfe



JUDITH BASIN
CONSERVATION DISTRICT

B&K LIVESTOCK



TOP OF THE CROP CLUB CALF SALE

ANNUALLY ON THE LAST SUNDAY OF SEPTEMBER

THE VINCENTS
Bryan, Kim & Girls
Moccasin, MT

Moore Farmers Oil



Moore 406-374-2555 Lewistown 406-535-6753 Denton 406-567-2532

Shawn Auck, Manager (406) 350-0389

Farm Supplies, Fertilizer, Chemicals, Custom Applications, Tires, and Oils



N-S

Travis, Nicole
Tara, Mac & Kate

Hedstrom Ranch

Wade & Kelly
Mikkelson

Kyle & Lindsay Schmitt
& Family



TORGERSON'S
EQUIPMENT

PLATINUM SPONSORS

Layton &
Heather Perry

Stricks Ag

NEUMANN CHAROLAIS

Your local source of quality Charolais genetics

Bruce & Sue Neumann
Matt & Cali Neumann
3984 Merino Rd
Geyser, MT 59447
Bruce (406)735-4488 / (406)788-6216
Matt (406)781-1801

PAUL & JANET
WERTHEIMER & FAMILY

Walt & Vicki Johnson

Urlick Law Firm

"Providing excellent legal counseling and results"

Oliver J. Urlick

Hannah Norskog
Clare Otis

406-566-2500

Offices in Stanford and Lewistown



UNITED GRAIN
CORPORATION

UNITED FOR SUCCESS

OXEN YOKE INN



Utica, Montana

SILVER

White Sulphur Springs, MT

STEVENSON



DOWN T
ANGUS

David & Sue Stevenson



BRONZE

"When You're Serious About Your Sound"

GUITARS
of MONTANA

Bing & Pam Schmitt Stanford 566-2223



www.guitarsofmontana.com

CATHY BECKER



JUDITH BASIN CO 4-H CALENDAR

May 2025

SUNDAY	MONDAY	TUESDAY	WEDNESDAY	THURSDAY	FRIDAY	SATURDAY
				1 FAIR ENTRY OPENS! MT 4-H Congress reg. opens	2	3
4 Stanford Club Mtg	5	6	7 4-H Council Mtg	8	9 JR Camp reg. closes	10 Curt Pate Horse Clinic
11 	12	13	14	15	16	17 Sheep Clinic
18 Sheep/Goat weigh and tagging at fairgrounds	19 Fair Board Mtg 5:30	20	21	22	23	24
25 Geyser Club Mtg	26 	27	28 SR Camp reg. closes	29	30	31 Chris Brown Horse Clinic (5/31-6/1)

2025 4-H INDOOR EXHIBIT DIVISIONS (revised 4/2025)

4-H ANIMAL SCIENCE

DIVISION 101: VETERINARY SCIENCE

Class 1—Veterinary Science Level 1 “From Airedales to Zebras”

Class 2—Veterinary Science Level 2 “All Systems Go!”

Class 3—Veterinary Science Level 3 “On the Cutting Edge”

Class 4—Veterinary Science Independent Study

Subclasses: Educational Poster, Educational Display, Project Book Activity, Any Other Entry. Subclass selected when entering exhibit in Fair Entry.

DIVISION 102: LIVESTOCK JUDGING

Class 1—Livestock Judging Educational Display

4-H ENGINEERING & TECHNOLOGY

DIVISION 103: AEROSPACE

Class 1—Aerospace Level 2 “Lift Off”

Class 2—Aerospace Level 3 “Reaching New Heights”

Class 3—Aerospace Level 4 “Pilot in Command”

Class 4—Aerospace Independent Study

Subclasses: Educational Poster, Educational Display, Project Book Activity, Any Other Entry. Subclass selected when entering exhibit in Fair Entry.

DIVISION 104: ELECTRICITY

Class 1—Electricity Level 1 “Magic of Electricity”

Class 2—Electricity Level 2 “Investigating Electricity”

Class 3—Electricity Level 3 “Wired for Power”

Class 4—Electricity Independent Study

Subclasses: Educational Poster, Educational Display, Project Book Activity, Any Other Entry. Subclass selected when entering exhibit in Fair Entry.

DIVISION 105: ROBOTICS

Class 1—Junk Drawer Robotics Level 1 “Give Robots a Hand”

Class 2—Junk Drawer Robotics Level 2 “Robots on the Move”

Class 3—Junk Drawer Robotics Level 3 “Mechatronics”

Class 4—Junk Drawer Robotics Independent Study

Subclasses: Educational Poster, Educational Display, Project Book Activity, Any Other Entry. Subclass selected when entering exhibit in Fair Entry.

DIVISION 106: SMALL ENGINES

Class 1—Small Engines Level 1 “Crank It Up!”

Class 2—Small Engines Level 2 “Warm It Up!”

Class 3—Small Engines Level 3 “Tune It Up!”

Class 4—Small Engines Independent Study

Subclasses: Educational Poster, Educational Display, Project Book Activity, Any Other Entry. Subclass selected when entering exhibit in Fair Entry.

DIVISION 107: WOODWORKING

Class 1—Woodworking Level 1 “Measuring Up”

Class 2—Woodworking Level 2 “Making the Cut”

Class 3—Woodworking Level 3 “Nailing It Together”

Class 4—Woodworking Level 4 “Finishing Up”

Class 5—Woodworking Independent Study

Subclasses: Educational Poster, Educational Display, Project Book Activity, Any Other Entry. Subclass selected when entering exhibit in Fair Entry.

4-H ENGINEERING & TECHNOLOGY

DIVISION 108: WELDING

Class 1—Welding Lv 1 “Arcs and Sparks: Shielded Metal Arc Welding”

Class 2—Welding Lv 2

Class 3—Welding Independent Study

Subclasses: Educational Poster, Educational Display, Project Book Activity, Any Other Entry. Subclass selected when entering exhibit in Fair Entry.

DIVISION 109: SNOWMOBILING

Class 1—Snowmobiling

Subclasses: Educational Poster, Educational Display, Any Other Entry.

Subclass selected when entering exhibit in Fair Entry.

4-H ENVIRONMENTAL AND NATURAL SCIENCE

DIVISION 110: ENTOMOLOGY

Class 1—Entomology Level 1 “Teaming with Insects Level 1”

Class 2—Entomology Level 2 “Teaming with Insects Level 2”

Class 3—Entomology Level 3 “Teaming with Insects Level 3”

Class 4—Entomology Independent Study

Subclasses: Educational Poster, Educational Display, Project Book Activity, Any Other Entry. Subclass selected when entering exhibit in Fair Entry.

DIVISION 111: FORESTRY

Class 1—Forestry Level 1 “Follow the Path”

Class 2—Forestry Level 2 “Reach for the Canopy”

Class 3—Forestry Level 3 “Explore the Deep Woods”

Class 4—Forestry Independent Study

Subclasses: Educational Poster, Educational Display, Project Book Activity, Any Other Entry. Subclass selected when entering exhibit in Fair Entry.

DIVISION 112: OUTDOOR ADVENTURES

Class 1—Outdoor Adventures Level 1 “Hiking Trails”

Class 2—Outdoor Adventures Level 2 “Camping Adventures”

Class 3—Outdoor Adventures Level 3 “Backpacking Expeditions”

Class 4—Outdoor Adventures Independent Study

Subclasses: Educational Poster, Educational Display, Project Book Activity, Any Other Entry. Subclass selected when entering exhibit in Fair Entry.

DIVISION 113: SHOOTING SPORTS

Class 1—Air Pistol

Class 2—Air Rifle

Class 3—Small Bore Pistol (.22)

Class 4—Small Bore Rifle (.22)

Class 5—BB Gun Safety

Class 6—Archery

Class 7—Shotgun

Class 8—Muzzleloading

Class 9—Hunting

Class 10-MT Western Heritage

Class 11- Shooting Sports Independent Study

Subclasses: Educational Poster, Educational Display, Project Book Activity, Any Other Entry. Subclass selected when entering exhibit in Fair Entry.

4-H ENVIRONMENTAL AND NATURAL SCIENCE

DIVISION 115: SPORT FISHING

Class 1—Sport Fishing Level 1 “Take the Bait”

Class 2—Sport Fishing Level 2 “Reel in the Fun”

Class 3—Sport Fishing Level 3 “Cast Into the Future”

Class 4—Sport Fishing Independent Study

Subclasses: Educational Poster, Educational Display, Project Book Activity, Any Other Entry. Subclass selected when entering exhibit in Fair Entry.

DIVISION 115: WILDLIFE

Class 1—Wildlife “4-H Wildlife Science Level 1”

Class 2—Wildlife Independent Study

Subclasses: Educational Poster, Educational Display, Project Book Activity, Any Other Entry. Subclass selected when entering exhibit in Fair Entry.

4-H FAMILY AND CONSUMER SCIENCE

DIVISION 116: CHILD DEVELOPMENT

Class 1—Child Development Level 1 “Building a Bright Beginning”

Class 2—Child Development Level 2 “Building Blocks of Learning”

Class 3—Child Development Level 3 “Building a Strong Foundation”

Class 4—Babysitting “I Have What it Takes to be YOUR Teen Babysitter”

Class 5—Child Development Independent Study

Subclasses: Educational Poster, Educational Display, Project Book Activity, Any Other Entry. Subclass selected when entering exhibit in Fair Entry.

DIVISION 117: FAMILY ADVENTURES

Class 1—Family Adventures “Family Adventures”

Class 2—Family Adventures Independent Study

Subclasses: Educational Poster, Educational Display, Project Book Activity, Any Other Entry. Subclass selected when entering exhibit in Fair Entry

DIVISION 118: INTERIOR DESIGN

Class 1—Interior Design Level 1 “Design Decisions”

Class 2—Interior Design Level 2 “Design Decisions”

Class 3—Interior Design Level 3 “Design Decisions”

Class 4—Interior Design Level 4 “Design Decisions”

Class 5—Interior Design Independent Study

Subclasses: Educational Poster, Educational Display, Project Book Activity, Any Other Entry. Subclass selected when entering exhibit in Fair Entry.

DIVISION 119: SEWING

Class 1—Sewing Level 1 “Sew Exciting” “STEAM Clothing 1: FUNDamentals”

Class 2—Sewing Level 2 “STEAM Clothing 2: Simply Sewing”

Class 3—Sewing Level 3 “STEAM Clothing 3: A Stitch Further”

Class 4—Sewing Independent Study

Subclasses: Educational Poster, Educational Display, Project Book Activity, Any Other Entry. Subclass selected when entering exhibit in Fair Entry.

DIVISION 120: KNITTING

Class 1—Knitting Beginner Level “Knit Together”. Subclasses; Household item (dishcloth, potholder), Clothing (hat, ski band, scarf, slipper, fingerless mitts), Blanket or Afghan, Other knit item (toy), Educational Display or Poster.

Class 2—Knitting Intermediate Level “Knit Together”. Subclasses; Household Item with pattern or colorwork, Clothing (mittens, vest, poncho), Blanket or Afghan with pattern or colorwork, Other knit item (advanced toy pattern), Educational Display or Poster.

Class 3—Knitting Advanced Level “Knit Together”. Subclasses; Household Item, Clothing, Blanket or Afghan, Other knit item Educational Display or Poster

Class 4—Knitting Independent Study

4-H FAMILY AND CONSUMER SCIENCE

DIVISION 121: CROCHET

Class 1—Crochet Beginner Level. Subclasses; Household Item (dishcloth, potholder), Clothing (hat, ski band, scarf, slippers, fingerless mitts), Blanket or Afghan, Other crocheted item (toy), Educational Display or poster.

Class 2—Crochet Intermediate Level. Subclasses; Household Item with pattern or colorwork, Clothing (mittens, vest, poncho), Blanket or Afghan with pattern or colorwork, Other crocheted item (advanced toy pattern), Educational Display or Poster.

Class 3—Crochet Advanced Level. Subclasses; Household Item, Clothing, Blanket or Afghan, Other crocheted item, Educational Display or Poster

Class 4—Crochet Independent Study

DIVISION 122: EMBROIDERY

Class 1—Embroidery Beginner Level

Class 2—Embroidery Intermediate Level

Class 3—Embroidery Advanced Level

Class 4—Embroidery Independent Study

Subclasses: Educational Poster, Educational Display, Project Book Activity, Any Other Entry. Subclass selected when entering exhibit in Fair Entry.

DIVISION 123: QUILTING

Class 1—Quilting Beginner Level. Subclasses; Educational Display or Poster, Quilted potholder, Mug Rug, Placemat, Table Runner, Wall Hanging, Lap Quilt, Any Other Entry.

Class 2—Quilting Intermediate Level. Subclasses; Educational Display or Poster, Quilted potholder, Mug Rug, Placemat, Table Runner, Wall Hanging, Lap Quilt, Any Other Entry.

Class 3—Quilting Advanced Level. Subclasses; Educational Display or Poster, Quilted potholder, Mug Rug, Placemat, Table Runner, Wall Hanging, Lap Quilt, Any Other Entry.

Class 4—Quilting Independent Study

4-H PLANT SCIENCE

DIVISION 124: CROP SCIENCE

Class 1—“Small Grains: Wheat, Oats, Barley and Rye”

Class 2—Crop Science Independent Study

Subclasses: Educational Poster, Educational Display, Project Book Activity, Any Other Entry. Subclass selected when entering exhibit in Fair Entry.

DIVISION 125: WEED SCIENCE

Class 1—Weed Science Level 1

Class 2—Weed Science Level 2

Class 3—Weed Science Independent Study

Subclasses: Educational Poster, Educational Display, Project Book Activity, Any Other Entry. Subclass selected when entering exhibit in Fair Entry.

DIVISION 126: GARDENING

Class 1—Gardening Level A “See Them Sprout”

Class 2—Gardening Level B “Let’s Get Growing”

Class 3—Gardening Level C “Take Your Pick”

Class 4—Gardening Level D “Growing Profits”

Class 5—Gardening Independent Study

Subclasses: Educational Poster, Educational Display, Project Book Activity, Any Other Entry. Subclass selected when entering exhibit in Fair Entry.

Class 7—Herb Vase (3 stems)

Class 8—Floral Patio Pot

Class 9—Herbal Patio Pot

Class 10—Vegetable Patio Pot

Class 11—Fruit Patio Pot

DIVISION 126: GARDENING (CONT)

Class 12 Vegetable Plate (3 vegetables)
Class 13—Fruit Plate (3 fruits)
Class 14: Any Other Entry
Class 15—Gardening Independent Study

DIVISION 127: RANGE SCIENCE

Class 1—Range Science Level 1
Class 2—Range Science Level 2
Class 3—Range Science Independent Study
Subclasses: Educational Poster, Educational Display, Project Book Activity, Any Other Entry. Subclass selected when entering exhibit in Fair Entry.

4-H COMMUNICATION AND EXPRESSIVE ARTS

DIVISION 128: COWBOY POETRY

Class 1—Cowboy Poetry “Spurrin’ the Words”
Class 2—Cowboy Poetry Independent Study
Subclasses: Educational Poster, Educational Display, Project Book Activity, Any Other Entry. Subclass selected when entering exhibit in Fair Entry.

DIVISION 129: LEATHERCRAFT

Class 1—Leathercraft Level 1 “Intro to Leathercraft & Creative Stamping”
Class 2—Leathercraft Level 2 “Beginning Leather Carving Unit 2”
Class 3—Leathercraft Level 3
Class 4—Leathercraft Level 4
Class 5—Leathercraft Level 5
Class 6—Leathercraft Level 6
Class 7—Leathercraft Level 7
Class 8—Leathercraft Level 8-10
Class 9—Leathercraft Independent Study
Subclasses: Educational Poster, Educational Display, Project Book Activity, Any Other Entry. Subclass selected when entering exhibit in Fair Entry.

DIVISION 130: PHOTOGRAPHY

Class 1—Photography Level 1 “Photography Basics”. *Subclasses*; Project Book Activity A Equipment, Activity B Lighting, Activity C Composition, Activity D Skill Building, Color Photo, Black & White, Matted Photo, Educational Poster, Educational Display, Photo Story (3-5 photos), Any Other Entry.
Class 2—Photography Level 2 “Next Level Photography”. *Subclasses*; Educational Poster, Educational Display, Project Book Activity, Color Photo, Black & White Photo, Matted Photo, Any Other Entry.
Class 3—Photography Level 3 “Mastering Photography”. *Subclasses*; Educational Poster, Educational Display, Project Book Activity, Color Photo, Black & White Photo, Matted Photo, Any Other Entry.
Class 4—Photography Level 4 Videography “Movie Magic”. *Subclasses*; Short 1-2 min. film, Long 5 min. film, Public Service Announcement, Storyboard/Script for Film Production, Podcast of Video Created, Filmed Interview on Specific Topic, Any Other Entry.
Class 5—Photography Independent Study

DIVISION 131: SCRAPBOOKING

Class 1—Scrapbooking Level 1 “Scrapbooking: A 4-H Guide to Preserving Memories”
Class 2—Scrapbooking Independent Study
Subclasses: Educational Poster, Educational Display, Single Page, Double Page, Scrapbooking Album, Digital Scrapbook, Project Book Activity, Any Other Entry.

DIVISION 132: THEATRE ARTS

Class 1—Theatre Arts Level 1 Beginner “Imagination in Action”
Class 2—Theatre Arts Level 2 Intermediate “Imagination in Action”
Class 3—Theatre Arts Level 3 Advanced “Imagination in Action”
Class 4—Theatre Arts Independent Study

DIVISION 132: THEATRE ARTS (CONT)

Subclasses: Educational Poster, Educational Display, Project Book Activity, Any Other Entry. Subclass selected when entering exhibit in Fair Entry.

DIVISION 133: VISUAL ARTS

Class 1—Acrylics and Oils
Class 2—Watercolors
Class 3—Drawings
Class 4—Mixed Media
Class 5—Pottery
Class 6—Fabric Craft
Class 7—Paper Craft
Class 8—Other (wood, metal, glass, etc)
Class 9—Independent Study

4-H FOOD AND NUTRITION

DIVISION 134: BAKING

Class 1—Biscuits and Scones
Class 2—Bars and Brownies
Class 3—Yeast Breads (buns, rolls, loaf)
Class 4—Muffins
Class 5—Cookies
Class 6—Quick Bread
Class 7—Pies and Tarts
Class 8—Cakes
Class 9—Gluten Free
Class 10—Any other entry

DIVISION 135: COOKING

Class 1—Cooking 101. *Subclasses*; Snacks, Side Dishes, Main Dish, Dessert, Any Other Entry.
Class 2—Cooking 201. *Subclasses*; Fruit, Vegetable, Grains, Protein Foods, Dairy, Dessert, Any other entry.
Class 3—Cooking 301. *Subclasses*; Fruit, Vegetable, Grains, Protein Foods, Dairy, Dessert, Any other entry.
Class 4—Cooking 401. *Subclasses*; Candy (3 pieces), Any dish featuring a whole grain, Any dish featuring a homemade pastry, Food science experiment display & presentation, Any other entry.
Class 5—Cooking Independent Study

DIVISION 136 CAKE DECORATING

Class 1—Cake Decorating Level 1. *Subclasses*; Single Layer Decorated, Decorated Cut Up Cake, Decorated Cake in Specialty Pan, Piping Technique Board, Sample Display of Flowers, Decorated using Special Effects, Educational Poster, Any Other Entry.
Class 2—Cake Decorating Level 2. *Subclasses*; Single Layer Decorated, Decorated Cut Up Cake, Decorated Cake in Specialty Pan, Piping Technique Board, Sample Display of Flowers, Decorated using Special Effects, Educational Poster, Any Other Entry.
Class 3—Level 3—4; *Subclasses*; Single Layer Decorated, Decorated Cut Up Cake, Decorated Cake in Specialty Pan, Piping Technique Board, Sample Display of Flowers, Decorated using Special Effects, Educational Poster, Any Other Entry.
Class 4—Independent Study

DIVISION 137 – FOOD PRESERVATION

Class 1—Food Preservation Pint or 1/2 pint water bath canned food (Jam/Jelly, etc.)
Class 2—Food Preservation Pint or 1/2 pint frozen or dried food (vegetable, fruit, etc.)
Class 3—Food Preservation Pint or 1/2 pint of another processed food
Class 4—Educational Poster
Class 5- Any Other Entry
Class 6—Independent Study

4-H LEADERSHIP AND PERSONAL DEVELOPMENT

DIVISION 138: CITIZENSHIP

Class 1—Exploring Citizenship

Class 2—Global Citizenship

DIVISION 139: SERVICE LEARNING

Class 1—Service Learning Level 1 “Agents of Change”

Class 2—Service Learning Level 2 “Raise Your Voice”

Subclasses: Educational Poster, Educational Display, Project Book

Activity, Any Other Entry. Subclass selected when entering exhibit in Fair Entry.

DIVISION 140: LEADERSHIP

Class 1—Leadership Plan of Action

Class 2—State Event Highlight Display

Class 3—County Event Highlight Display

Class 4—Summer Camp Promotional Display

Class 5—Any Other Entry

4-H OTHER

DIVISION 141: CLOVERBUD

Class 1—Cloverbud

Subclasses: Educational Poster, Educational Display, Project Book

Activity, Any Other Entry. Subclass selected when entering exhibit in Fair Entry.

DIVISION 142: EXPLORING 4-H

Class 1—Educational Poster

Class 2—Educational Display

DIVISION 143: SELF DETERMINED

Class 1—Educational Poster

Class 2—Educational Display

Indoor Exhibit Divisions, Classes and Subclasses as shown above supersede the Divisions and Classes published in the 2025 Fair Book printed prior to 4/25/2025.

Subclasses will be selected at the time the exhibit is entered into Fair Entry.

Indoor exhibit Project Book Activity indicates an item or class completed during the time in that project book.